

HDR-16x16 PLUS

16x16 Port 4K 30Hz HDMI Matrix Switch



The HDR-16x16 Plus V3 allows users to route content from any 16 HDMI sources on any 16 displays independently up to 40 feet away

- Switches 16 HDMI inputs with 16 HDMI outputs
- Sources can be routed independently to displays
- Switching controlled via the front panel, RS-232 and TCP/IP via web-based software
- Supports video resolutions of 480p, 720p, 1080i, 1080p and 3840x2160 (4k) @ 30Hz
- Supports 7.1 Digital Surround Sound Audio
- HDCP and HDMI 1.4 compliant
- Supports full EDID emulation from database or monitors
- Delivers uncompressed digital video with zero signal loss
- Outputs HDMI up to 40 feet
- Rack mountable

- Wall Displays
- Digital Signage
- Airports
- Dealer Rooms
- Control Rooms
- Audio/Visual Presentations
- Shopping Centers
- Security
- Point-of-Sale
- Hotels/Resorts
- KVM Switch



Designed and Manufactured in the USA

OVERVIEW

The HDR-16x16 Plus V3 conforms to the HDMI 1.4 standard and provides a connection to view any sixteen HDMI video sources on any combination of sixteen video displays. The matrix configuration provides maximum flexibility, allowing switching between any high-definition source and/or display. The HDR-16x16 Plus V3 provides HDMI output up to 40 feet with HDTV resolutions of 480p, 720p, 1080i, 1080p and 3840x2160 (4k) @30Hz. The system works with Blu-ray players, TiVo systems, HT PCs and satellite set-top boxes that connect to an HDMI display. Users can switch to any source locally or remotely via an RS-232, USB or TCP/IP connection. Our HDMI router is controlled by Windows®-based software that is easy to understand and simple to use – a cornerstone of all Smart-AVI products.

FLEXIBLE CONTROL

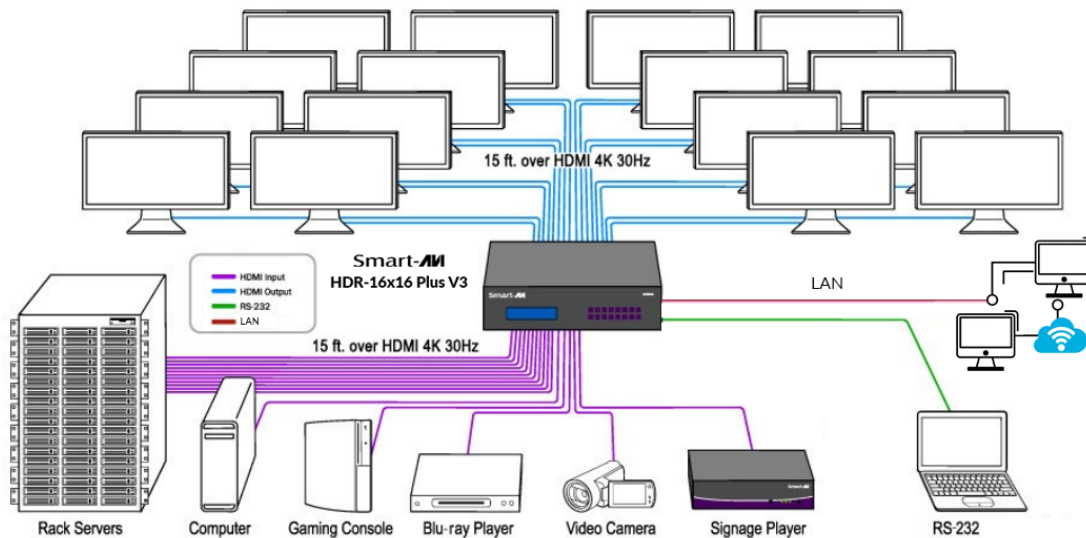
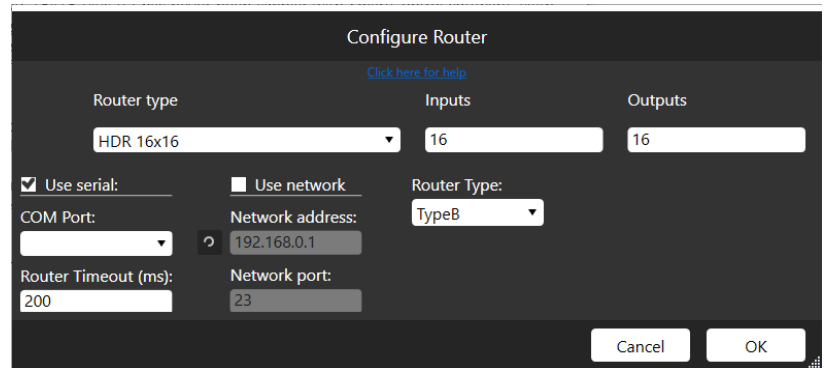
The SmartAVI HDR-16x16 Plus V3 can be controlled from the front panel via keypad and LCD, allowing users to see which inputs are connected to which outputs.

RS-232: Controlling the HDR-16x16 Plus V3 has never been simpler with SmartAVI's Windows®-based SmartControl software. With SmartControl, users can assign a unique name to each port on the matrix, as well as each display, customizing projects to meet users' needs. Although all the functions of the matrix are available locally on the front panel of the HDR-16x16 Plus V3, using SmartControl allows for customization of all the matrix's functions.

TCP/IP: Remote control is essential to real-time management of the HDR-16x16 Plus V3. SmartAVI's SMTCP module is the perfect solution to effective remote management.

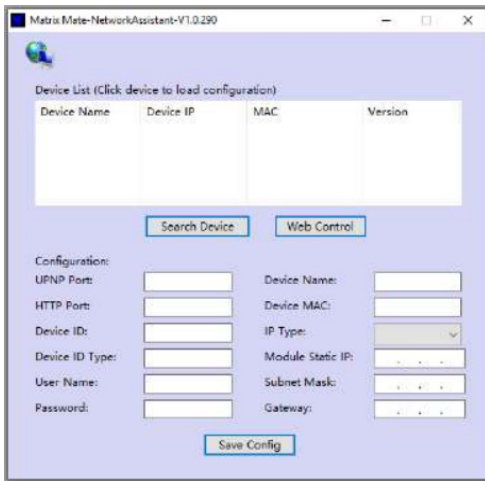
SOFTWARE SETUP

The HDR-16x16 Plus V3 hardware comes with the easy-to-use, Windows®-based SmartControl software application that makes user interface simple. Using SmartControl, you can assign a unique name to each port on the HDR 16x16, customizing projects to your liking and needs.



LAN (TCP-IP) CONTROL

To enable TCP-IP control, connect an ethernet cable to the HDR-16x16 Plus V3 ethernet port. Refer to page 5 for port information. By default, the HDR-16x16 Plus V3 will connect to the network using DHCP. Download Matrix Mate-Network Assistant software and execute to locate your IP address. Click the Search button. After a few seconds your IP address should appear.

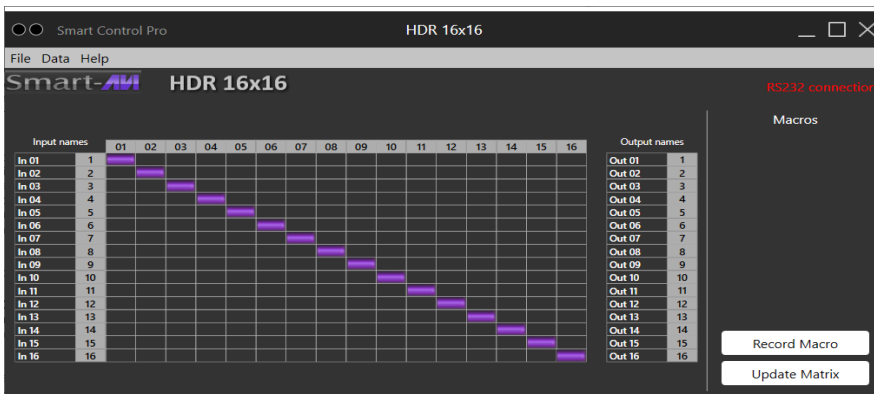


Enter the IP address in a browser of your choice and the Web Control login screen should appear as shown in figure 5-1.



Figure 5-1: SmartAVI HDR-16x16 Plus V3 Login Webpage

The default Username and Password is admin. After logging in successfully, you will be brought to the control screen shown in Figure 5-2.

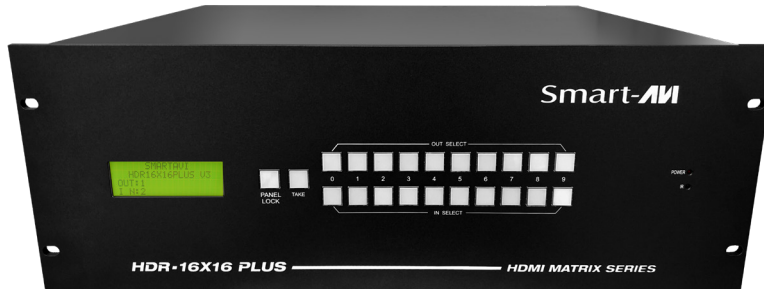


Control Webpage

To switch an input to a specific output, select the desired input to the left of the desired output.

Figure 5-2: Control Webpage

HDR-16X16 PLUS V3 SPECIFICATIONS:



HDR 16x16 Plus V3 Front



HDR 16x16 Plus V3 Rear

VIDEO	
HDTV Resolutions	480p, 720p, 1080i, 1080p and 3840x2160 (4k) @30Hz, Supports all DVI-D Resolutions
SDTV Resolutions	480i
Input Interface (TX)	(16) HDMI Type A 19-pin Female TMDS
Output Interface (RX)	(16) HDMI Type A 19-pin Female TMDS
Input Cable Length	Up to 40 ft.
Output Cable Length	Up to 40 ft.
CONTROL	
Front Panel	Buttons & LCD Display
RS-232	DB9 Female, 9600 bps, N, 8 1, No flow control
TCP/IP	On-Board LAN

OTHER	
Warranty	Limited 1 Year Parts and Labor
Power	Internal 100-240 VAC
Dimensions	17"W x 7 1/8"H x 15"D Front Panel is 19" wide to fit a 19" rack
Weight	24.45 lbs.
Operating Temp.	0 to +40°C (+32° to +104° F)
Storage Temp.	-20° to +60°C (+20° to +140° F)
Humidity	10% to 85% (Non-condensing)
HDR-16x16 Plus V3 Approvals	FCC, CE, RoHS Compliant
Power Supply Approvals	UL, CE, CSA, CEC, RoHS

WHAT'S IN THE BOX?	
Model Number	Description
HDR-16x16-Plus-V3-S	16 Input 16 Output HDMI Matrix Switch (Includes Power Cord)
HDR-16x8-Plus-V3-S	16 Input 8 Output HDMI Matrix Switch (Includes Power Cord)
HDR-8x16-Plus-V3-S	8 Input 16 Output HDMI Matrix Switch (Includes Power Cord)