

SMART CONTROLWALL

POWERED BY Smart-AM



Cutting-edge video wall solution with integrated software for complete visual control and flexibility.

SmartControlWall simplifies complex video wall technology, delivering outstanding results with click-and-drag software operation!

SMARTCONTROLWALL IS...



COMPREHENSIVE

View up to 56 video sources in full, high resolution detail.



HIGHLY COMPATIBLE

Can run countless file types simultaneously in any hardware environment.



CONTROL FOCUSED

Integrated software offers drag-and-click functionality for easy use.



REAL-TIME RESULTS

Display imagery and information as situations unfold for unparalleled supervision



COST-EFFECTIVE

Save resources and workspace with the value of an all-in-one management solution.



FLEXIBLE AND INTUITIVE

Choose from pre-made layouts or customize your very own in real-time for optimal workflow.



COMPLEX MADE SIMPLE

Easy-to-use software and frontpanel control ensure comfortable use for those of any skill level.



FULLY OPERATIONAL

It's Plug-and-Go so You Can Install it Instantly!

A Complete Solution

High-Grade Video Wall Processing

1080p (1920x1080 @ 60Hz) high resolution picture on over 56 screens for unparalleled display functionality.

Integrated Software Solution

Choose from a variety of preloaded, fully customizable workspace layouts, or design your own with easy-to-use click-and-drag operation. Great for crafting complex visualizations simply and efficiently.

Seamless Signal Switching

Send signals from connected devices to the entire video wall, individual monitors, or even to independent windows built into individual screens for comprehensive displays to best fit your needs.

Real-Time Performance

Display your workspace in real-time on connected video walls both directly and remotely over IP.

TAKE COMMAND OF YOUR DISPLAYS

Extend your video walls up to 56 screens for immense, high detail visualizations. SmartControlWall seamlessly blends the functionality of a video wall processor, matrix router, and digital workflow optimizer for stunning results in real-time. Specifically geared towards control applications in critical situations, SmartControlWall is the ideal video wall solution for command centers of any variety.



SmartControlWall offers flexible layouts that are responsive to real-time PCbased control. Arrange and configure displays to best fit your needs: populate each with media from connected devices or the units very own storage.

SmartControlWall is an all-in-one hardware solution you can count on to get the job done right!



SOPHISTICATED AND CUSTOM BUILT



SmartControlWall is a fully customizable hardware solution specifically designed for command centers and set-ups of all kinds.

SmartControl for Any Application

SmartControlWall delivers superb command optimization and large-scale visual layouts perfect for use in:

Government Facilities

Immediately display crucial information and visuals to best fit any situation.

Military Bases

Unparalleled real-time monitoring and resource management for responsive performance mid-operation.

Aerospace Mission Control

Monitor and supervise in mission-critical situations with impressive analytical layouts and functionality.

Air-Traffic Control

Take command of circumstances otherwise left outside your control with intuitive real-time situation surveillance.

Emergency Service Stations

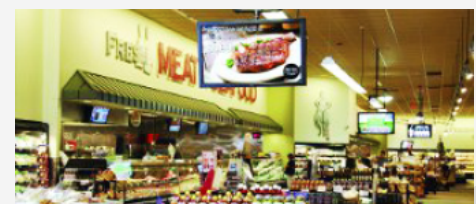
Monitor issues as they arise and take the necessary actions.

Security and Police Facilities

Outstanding surveillance and public safety visualization abilities.

Data Centers and Secure Information Hubs

Display minute system issues in full detail for effective problem solving.



WHAT MEDIA DOES SMARTCONTROLWALL SUPPORT?

SmartControlWall supports all kinds of content, so you don't have to worry about messy file conversion. Just add any of the following file types to your layout for seamless and impressive results:

- HD Video (MPEG/AVI)
- Live Video
- Streaming (H.264)
- Remote Desktop
- HTML
- Flash
- Java
- Audio
- Live Feeds
- PDF
- Images (JPEG/GIF/PNG...)
- RSS

PROGRAM, CONTROL, MODIFY, UPDATE AND ACCESS YOUR VIDEO WALL FROM ANYWHERE SECURELY!

SmartControlWall is not only comprehensive: it's convenient. If you are not in direct contact with your SmartControlWall unit, you can still control it via a secure internet connection.

Log in to our SmartControl software (available as a free download from our website), and connect remotely with your SmartControlWall device by inputting your custom username and password. From there, you have full access to SmartControlWall's software offerings, including real-time layout management and signal switching.

CRAFT YOUR IDEAL COMMAND LAYOUT WITH INTEGRATED SOFTWARE

Customize a Layout

- Craft your ideal digital command layout with simple drag-and-click operation.
- Customize the size and placement of windowed content or live feeds.
- Clear and delete content with ease.
- Populate displays with HD video, live-streamed content, still imagery, Microsoft Office files, desktop emulation and more!



Real-Time Application

- Send imagery, information, and emulated system operation to a video wall in real time.
- Update layouts and video wall displays on the fly.
- Add windowed views to specific video wall screens for more comprehensive displays.
- The SmartControlWall's top-tier processing power ensures peak performance in any operation.



LIST OF FUNCTIONAL AND FLEXIBLE OPERATIONS

COMPLETE VISUAL COMMAND

- Customize layouts, including structure, labels, and settings.
- Create , store, and access custom layouts whenever you need them.
- Preview layouts on connected video walls in real time.
- Clear or delete out-dated or obsolete layouts, and secure ideal ones via Lock features.
- Manage multiple layouts at once with unique Management features.

SIMPLE SOURCE MANAGEMENT

- Populate your layouts with content from innumerable HD sources.
 - Add, rename, or delete content in realtime for enhanced command of your video wall display.
- Add HD video, still imagery, webbased content, streaming media, URLs, PowerPoint, and even emulated applications to your display.
 - Place content freely in the layout with easy click-and-drag operation.

COMPLETE VISUAL COMMAND

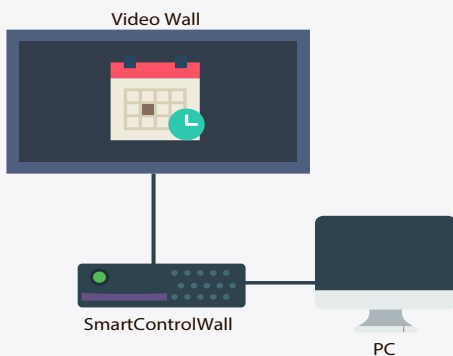
- Add windowed feeds to multiple HD sources on a single video wall in real time.
- Structure windowed views flexibly for an ideal layout.
- Great for live video feeds, application emulation, and more!

INTUITIVE, POWERFUL, FULLY CUSTOMIZABLE COMMAND CONFIGURATIONS

SmartControlWall Software Features:

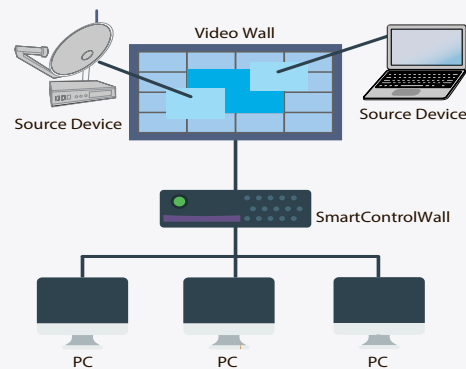
- Manage up to 56 input source signals
- Click-and-drag operation via mouse
- Fully customizable, user-crafted layouts
- 1080p HD resolution (1920x1080 @ 60Hz)

Real-Time and Scheduled Video Wall Displays



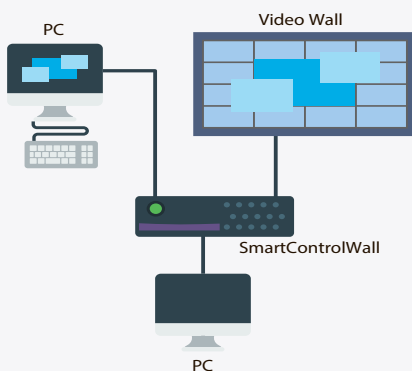
Set SmartControlWall to display content in real-time or on a schedule to best fit your command needs.

Intuitive Source-to-Video Wall Management



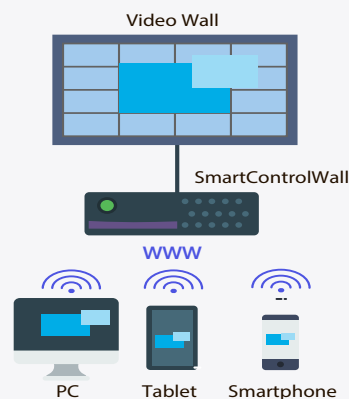
Access and display remote applications, computer workstations, and signal sources via software.

Comprehensive Control Interface Made Simple



Take direct command of remote computers and applications in real-time for full-spectrum control of your command environment.

Secure SmartControlWall Access via the Internet



Take command of your SmartControlWall environment from anywhere in the world with our secure TCP/IP web control.

SMARTCONTROLWALL SPECIFICATIONS



SmartControlWall is a **BUILD-TO-ORDER** solution!

SmartAVI will custom build your ideal SmartControlWall unit, ensuring it is the right fit for your unique command set-up.
For more information and full customization specifications, please contact SmartAVI today!

PROCESSOR		CHASSIS	
Motherboard	Intel® Dual Xeon® Processor	Form	Expandable 4U, Rackmountable
CPU Socket Type	Dual-socket	Width	17.0 in.
Cores	Up to 22	Height	3.5 in.
Cache	Up to 55MB	Depth	15.0 in.
System Bus	QPI up to 9.6 GT/s	Weight	**Build-Specific**
BIOS	Version 2.0 or above required	Color	Black
SYSTEM MEMORY		EXPANSION SLOTS	
Memory Capacity	24x 288-pin DDR4 DIMM slots; Up to 3TB ECC 3DS LRDIMM	PCI-Express	<ul style="list-style-type: none"> 8x PCI-E 3.0 x16 (double-width) slots 2x PCI-E 3.0 x8 (in x16) slots 1x PCI-E 2.0 x4 (in x16) slots
Memory Type	2400/2133/1866/1600MHz ECC DDR4 SDRAM 72-bit	SOFTWARE	
DIMM Sizes	RDIMM: 4GB-64GB; LRDIMM: 32GB-64GB; 3DS LRDIMM: 128GB	Packaged Software	SmartControlWall Server SmartControlWall Manager

ORDER INFORMATION

SCW-S	Real-time video wall processor with integrated layout control software. [Includes: SmartControlWall, SmartControlWall Server, SmartControlWall Manager, power supply]
-------	--



Designed and Manufactured in the USA

www.smartavi.com

Tel: 800.AVI.2131 • 818.503.6200 • 11651

Vanowen St. North Hollywood, CA. 91605

Smart-AVI
SMART AUDIO VIDEO INNOVATION