

EZWALL-PRO 3X3 V3

MULTI-FORMAT VIDEO WALL PROCESSOR



USER MANUAL



Designed and Manufactured in the USA

Smart-AVI

1-800-284-2131
www.smartavi.com

OVERVIEW

TECHNICAL SPECIFICATIONS	3
WHAT'S IN THE BOX?	4
FRONT AND BACK	4
HARDWARE INSTALLATION	5
FRONT PANEL CONTROL	6
SECTION HEADER 3X3 AND 2X4 MODES	6
ESTABLISHING AN RS-232 CONNECTION	7-8
IR REMOTE CONTROL	8
CONTROL VIA ETHERNET	9-11
TROUBLESHOOTING	12
TECHNICAL SUPPORT	12
LIMITED WARRANTY STATEMENT	13

TECHNICAL SPECIFICATIONS

VIDEO & AUDIO	
Output Resolutions	Up to 1080P (1920 x 1080 @ 60 Hz)
Input Resolutions	Up to 1080P (1920 x 1080)
Input Video Signal	1.2 volts
Input DDC Signal	5 volts
Outputs	(9) HDMI2.0
DVI Format	DVI-I, Dual-link
Inputs	(1) HDMI, (1) DVI, (1) VGA, (1) IR, (1) RS-232, (1) USB 2.0 Type A, (1) RJ-45
HDCP Compliance	1.0/2.0
Audio	(1) 3.5mm input, (1) 3.5mm output
CONTROL	
Front Panel	Tactile Switches
RS-232	DB9 Female, 115200 bps, N, 8 1, No flow control
TCP/IP	RJ-45
IR Remote Control	EZ-RMT (NEC 38 KHz)
OTHER	
Power Supply	12VDC5A
Dimensions	17.125" W x 3.625" H x 7.5" D
Weight	7.9 lbs.
USB MEDIA PLAYER	
Signal Type	USB 2.0, 1.1, and 1.0 (Type A)
Video Formats	MJPEG, MPEG-1, MPEG-2, MPEG-4, Vvid, DivX H.264
Max Resolution	1920 x 1080 @ 30 fps
Max Data Rate	20 Mbps
Audio Formats*	MP3, WMA, AAC, MP2, PCM, AC3
Photo Max Resolutions	JPEG - 15360x8640, BMP - 9600x6400, PNG - 9600x6400
Other	Max TXT resolution: 1200x800; Max ANSI/UNICODE GB/UTF8 file size: 1MB

WHAT'S IN THE BOX?

PART NO.	Q-TY	DESCRIPTION
EZW3X3V3-S	1	Multi-Format Video Wall Processor. Includes: [EZW3X3V3 and (CCPWR06)]
PS12VDC5A	1	Power Adapter
SAVI-RMT	1	IR Remote Control
SM-EYE2	1	IR Receiver
	1	User Manual

EZWALL-PRO 3X3 V3 FRONT

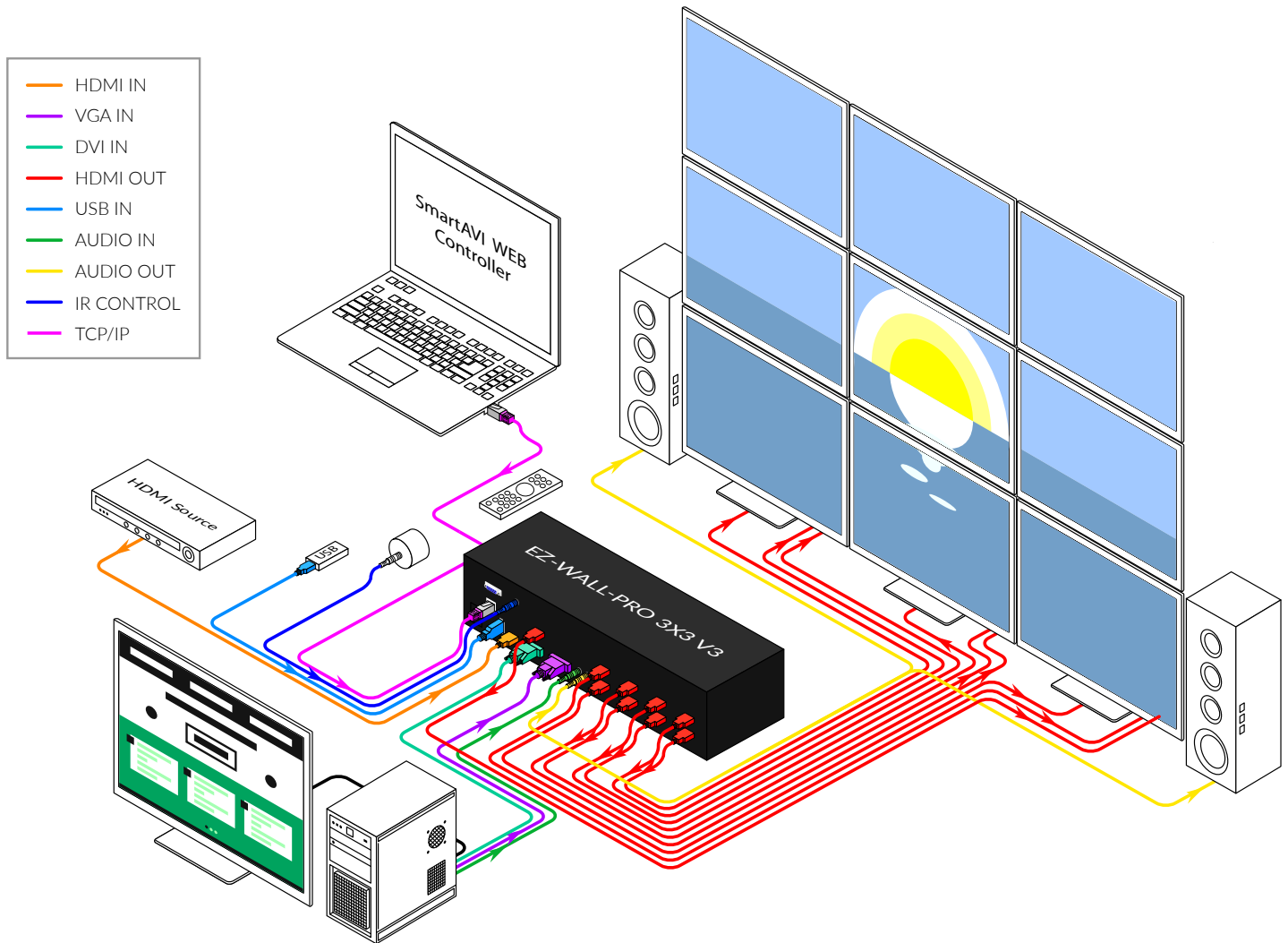


EZWALL-PRO 3X3 V3 BACK



HARDWARE INSTALLATION

1. Position EZWall-Pro 3x3 V3 conveniently and keep it unplugged
2. Connect HDMI output cables between the EZWall-Pro 3x3 V3 and your video wall screens
3. Connect any input to their corresponding signal source (Blu-Ray player, computer, etc)
4. Optionally connect the IR receiver to the IR input jack at the back of the EZWall-Pro 3x3 V3
5. Optionally connect an RS-232 cable from a PC to the RS-232 port of the unit for additional control
6. Optionally connect an Ethernet cable to the EZWall-Pro 3x3 V3 for additional control from over the internet (TCP/IP)
7. Turn on the EZWall-Pro 3x3 V3
8. Wait for a few seconds for the unit to initialize



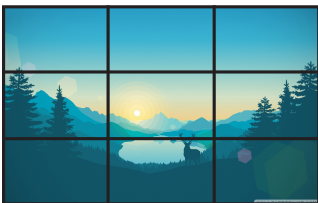
FRONT PANEL CONTROL

To switch to Video Wall mode, press the WALL button. To switch to Clone mode, press the CLONE button.



To switch between listed sources, press:

1. VGA
2. HDMI
3. DVI
4. USB
5. Wall
6. Macro
7. CLONE MODE (See above)
8. LOCK (See above)



VIDEO WALL MODE

Users can project the input image across nine HD screens (3x3 configuration).



CLONE MODE

Users can route the input image to each display individually.

3X3 AND 2X4 MODES

The EZWall 3x3 V3 has two dedicated modes the user can change to.

1. 3x3 Mode – Selected with //T using RS-232

This mode will provide the user with the following options:

- a. 1x2
- b. 1x3
- c. 2x2
- d. 3x3

1. 2x4 Mode – Selected with //F using RS-232

This mode will provide the user with the following options:

- a. 1x2
- b. 1x3
- c. 1x4
- d. 2x2
- e. 2x3
- f. 2x4

The EZWall 3x3 V3 defaults to 3x3 Mode and while in this mode the user will only have access to the four options shown above in section 1a. To select from the other six options shown above in section 2a, the user will need to change to 2x4 Mode. The reason these modes are separated is because both modes can support 1x2, 1x3, and 2x3, but will display the arrangement differently based on the orientation of your displays.

ESTABLISHING AN RS-232 CONNECTION

BEFORE YOU START

The EZWall-Pro 3x3 V3 may also be controlled via RS-232 commands. This feature requires that an RS-232 card is installed in your computer or a USB to RS-232 adapter.

ESTABLISHING AN RS-232 CONNECTION

Establish a connection to the SmartAVI device:

1. Connect an RS-232 cable to the RS-232 connector on the PC.
2. Connect the other end of the cable to the RS-232 port of the Smart-AVI device.
3. Use Windows Control Panel / Device Manager to identify the Com port number. See instructions below.
4. Power on the device.

If you are using a USB to COM port adapter on a Windows PC and need to identify the COM port used, do the following:

1. Click on the start button
2. Click on Control Panel
3. Click on Device Manager
4. Click on the arrow next to Ports (COM & LPT)

You should see the name of your adapter and the COM port number in use.

SETTING UP THE TERMINAL APPLICATION

1. Run the terminal client of your choice such as HyperTerminal or PuTTY.
2. Select the correct COM port on the PC.
3. Use the following connection settings: **115200, N, 8, 1, no flow control**.

Once the connection is established type `/// and hit Enter. The EZWall-Pro 3x3 V3 should respond with a list of available commands.`

COMMANDS	DESCRIPTION
//B	Boot EZWall-Plus
//In	Input 1-4 (n=1 : VGA, 2: HDMI, 3: DVI, 4: USB)
//C	Clone mode
//W	Wall mode (default Configuration)
//Rn	Rotate the output for 180 degree. Output of channel 1-4 (n=1 - Output #1, n=2 - Output #2, n=3 - Output #3, n=4 - Output #4, n=5 - Output #1 and #2, n=6 - Output #3 and #4, n=7 - All four Output)
//Pn	Set up Video Configuration for Wall Secondary Button: (n = 1...4 for 3x3 mode and n = 1...6 for 2x4 mode)
//T	Set 3x3 mode
//T1	Set Wall mode 3x3
//T2	Set Wall mode 2x2
//T3	Set Wall mode 1x3
//T4	Set Wall mode 1x2
//F	Set 2x4 mode
//F1	Set Wall mode 2x4 (Only applies in 2x4 Mode)
//F2	Set Wall mode 2x3 (Only applies in 2x4 Mode)
//F3	Set Wall mode 2x2 (Only applies in 2x4 Mode)
//F4	Set Wall mode 1x4 (Only applies in 2x4 Mode)
//F5	Set Wall mode 1x3 (Only applies in 2x4 Mode)
//F6	Set Wall mode 1x2 (Only applies in 2x4 Mode)

ESTABLISHING AN RS-232 CONNECTION (CONTINUED)

OSD Menu Navigation

COMMANDS	DESCRIPTION
//M	Open OSD Menu
//MU	Navigate UP in menu
//MD	Navigate DOWN in menu
//ML	Navigate LEFT in menu
//MR	Navigate RIGHT in menu
//MC	Confirm in menu
//ME	Exit out of menu
//?	Command Help (this menu)

IR REMOTE CONTROL

BUTTON	DESCRIPTION
SW/SP	Cycle between Wall and Clone mode
INPUT	Input specifier
PC	Press INPUT + PC to switch to VGA as the input source
HDMI	Press INPUT + HDMI to switch to HDMI as the input source
DVI	Press INPUT + DVI to switch to DVI as the input source
DP	Press INPUT + DP to switch to the USB player menu
MENU	Enter the configuration menu
EXIT	Exit current menu

When in 3x3 mode, press INPUT + 1-4 to switch to a specific 3x3 display mode.
When in 2x4 mode, press INPUT + 1-6 to switch to a specific 2x4 display mode.

BUTTON	DESCRIPTION
Up Arrow	Navigates UP in menu
Down Arrow	Navigates DOWN in menu
Left Arrow	Navigates LEFT in menu
Right Arrow	Navigates RIGHT in menu
Input -> Up Arrow	Set to 3x3 Mode
Input -> Down Arrow	Set to 2x4 Mode
Input -> 1	Set Wall Mode to 3x3 (Only applies in 3x3 Mode)
Input -> 2	Set Wall Mode to 2x2 (Only applies in 3x3 Mode)
Input -> 3	Set Wall Mode to 1x3 (Only applies in 3x3 Mode)
Input -> 4	Set Wall Mode to 1x2 (Only applies in 3x3 Mode)
Input -> 1	Set Wall Mode to 2x4 (Only applies in 2x4 Mode)
Input -> 2	Set Wall Mode to 2x3 (Only applies in 2x4 Mode)
Input -> 3	Set Wall Mode to 2x2 (Only applies in 2x4 Mode)
Input -> 4	Set Wall Mode to 1x4 (Only applies in 2x4 Mode)
Input -> 5	Set Wall Mode to 1x3 (Only applies in 2x4 Mode)
Input -> 6	Set Wall Mode to 1x2 (Only applies in 2x4 Mode)



CONTROL VIA ETHERNET

EZWall-Pro 3x3 V3 TCP/ IP control is a feature that allows mode switching and other configurations to be controlled remotely via HTTP. Manage your EZWall-Pro 3x3 V3 with ease from anywhere in the world. First you must find the IP address for the EZWall-Pro 3x3 V3. Finder.exe (Smart IP-Finder) is conveniently available on our website; please visit www.smartavi.com/helpful-links.html for this and our full list of compatible third-party software. Download and execute the IP address Finder software for your product. The EZWall-Pro 3x3 V3 and its IP address should appear in the display as shown in Figure 9-1.

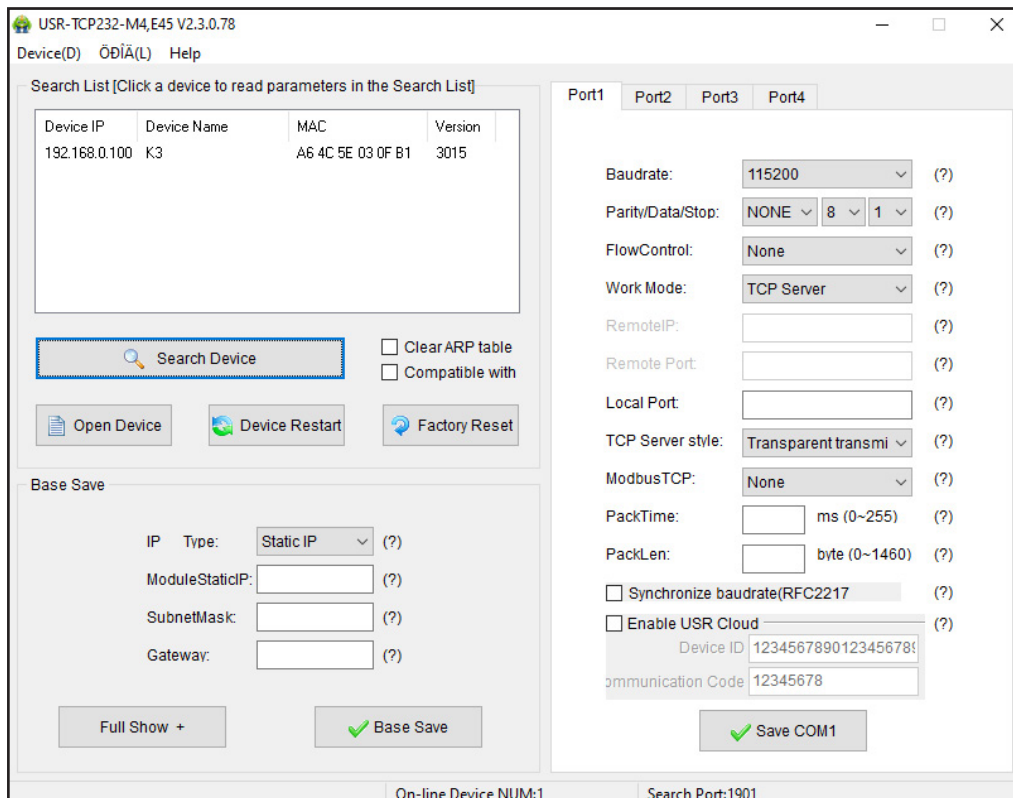


Figure 9-1

CONTROL VIA ETHERNET (CONTINUED)

Enter the IP address into a web browser of your choice. You should see the EZWall-Pro 3x3 V3 login pop-up window. The User ID and Password are case sensitive. User ID = **admin**, Password = **admin**.

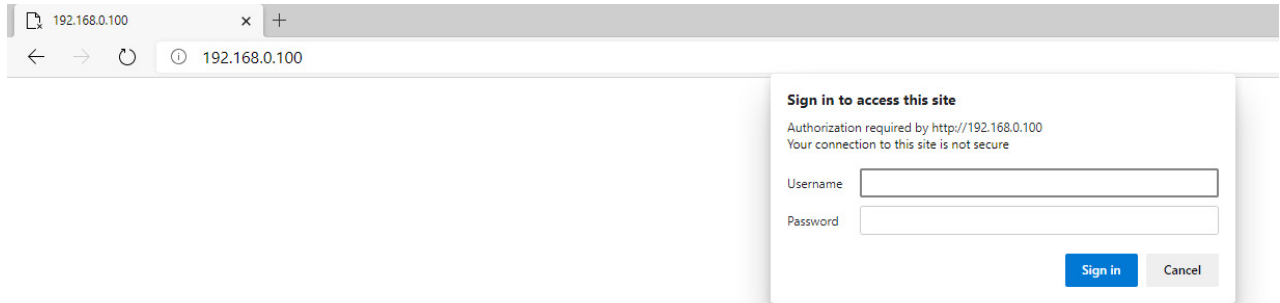


Figure 10-1

Click the **Settings Button** on the upper left-hand side of the web page to configure your network settings or change your password.



Figure 10-2

CONTROL VIA ETHERNET (CONTINUED)

You can use the internal web page to set the EZWall-Pro 3x3 V3 to Wall Mode or Clone Mode and set the desired source. See Figure 11-1

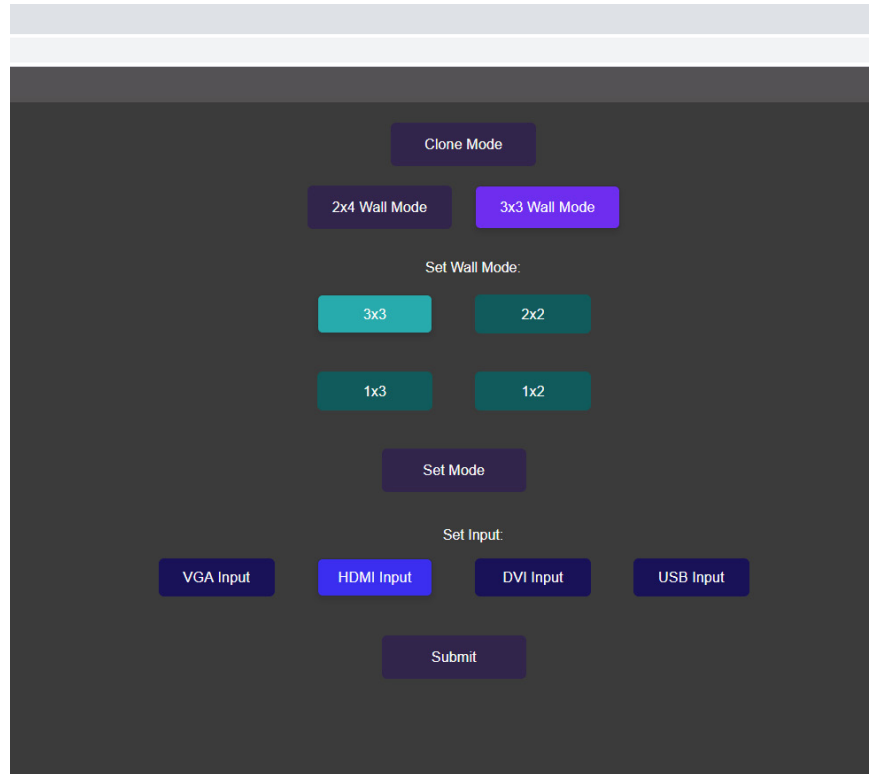


Figure 11-1

From the **Administration Settings** page you can change network settings and change username and password. See Figure 11-2

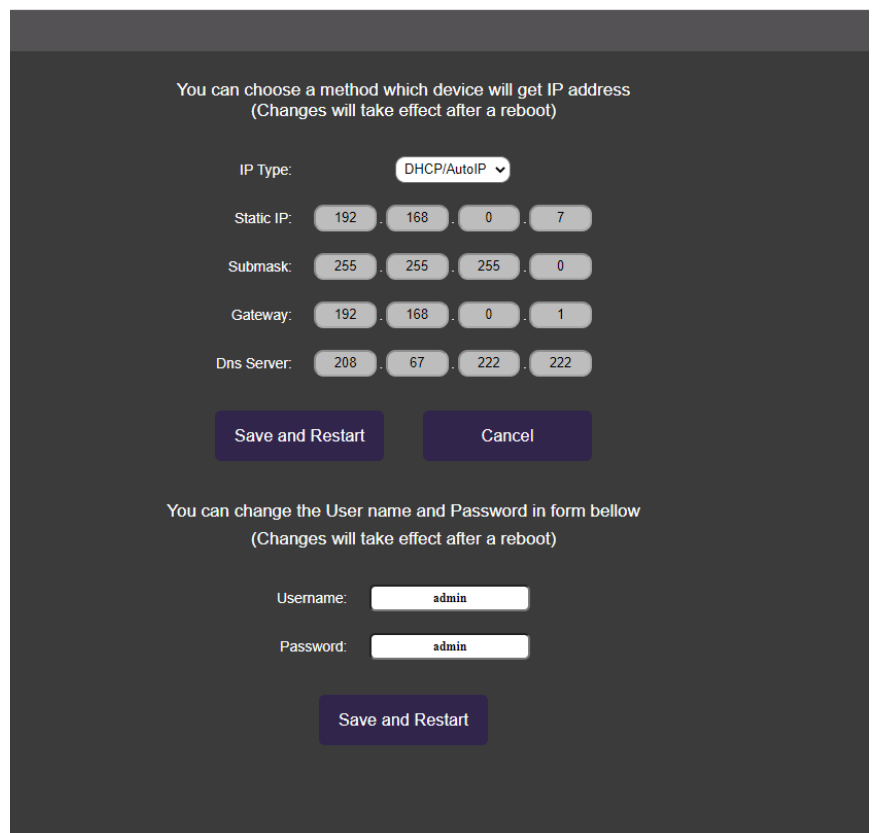


Figure 11-2

TROUBLESHOOTING

No Power

- Make sure that the power adapter is securely connected to the power connector of the unit.
- Check the output voltage of the power supply and make sure that the voltage value is around 12VDC.
- Replace the power supply.

No Video

- Check if all the video cables are connected properly.
- Connect the computer directly to the monitor to verify that your monitor and computer are functioning properly.
- Restart the computers.

Keyboard is not working

- Check if the keyboard is properly connected to the unit.
- Check if the USB cables connecting the unit and the computers are properly connected.
- Try connecting the USB on the computer to a different port.
- Make sure that the keyboard works when directly connected to the computer.
- Replace the keyboard.

Mouse is not working

- Check if the mouse is properly connected to the unit.
- Try connecting the USB on the computer to a different port.
- Make sure that the mouse works when directly connected to the computer.
- Replace the mouse.

No Audio

- Check if all the audio cables are connected properly.
- Connect the speakers directly to the computer to verify that the speakers and the computer audio are functioning properly.
- Check the audio settings of the computer and verify that the audio output is through the speakers.

TECHNICAL SUPPORT

For product inquiries, warranty questions, or technical questions, please contact info@smartavi.com.

LIMITED WARRANTY STATEMENT

A. Extent of limited warranty

SmartAVI, Inc. warrants to the end-user customers that the SmartAVI product specified above will be free from defects in materials and workmanship for the duration of 1 year, which duration begins on the date of purchase by the customer. Customer is responsible for maintaining proof of date of purchase.

SmartAVI limited warranty covers only those defects which arise as a result of normal use of the product, and do not apply to any:

- a. Improper or inadequate maintenance or modifications
- b. Operations outside product specifications
- c. Mechanical abuse and exposure to severe conditions

If SmartAVI receives, during applicable warranty period, a notice of defect, SmartAVI will at its discretion replace or repair defective product. If SmartAVI is unable to replace or repair defective product covered by the SmartAVI warranty within reasonable period of time, SmartAVI shall refund the cost of the product.

SmartAVI shall have no obligation to repair, replace or refund unit until customer returns defective product to SmartAVI.

Any replacement product could be new or like new, provided that it has functionality at least equal to that of the product being replaced.

SmartAVI limited warranty is valid in any country where the covered product is distributed by SmartAVI.

B. Limitations of warranty

To the extent allowed by local law, neither SmartAVI nor its third party suppliers make any other warranty or condition of any kind whether expressed or implied with respect to the SmartAVI product, and specifically disclaim implied warranties or conditions of merchantability, satisfactory quality, and fitness for a particular purpose.

C. Limitations of liability

To the extent allowed by local law the remedies provided in this warranty statement are the customers sole and exclusive remedies.

To the extent allowed by local law, except for the obligations specifically set forth in this warranty statement, in no event will SmartAVI or its third party suppliers be liable for direct, indirect, special, incidental, or consequential damages whether based on contract, tort or any other legal theory and whether advised of the possibility of such damages.

D. Local law

To the extent that this warranty statement is inconsistent with local law, this warranty statement shall be considered modified to be consistent with such law.

Smart-AVI

SMART AUDIO VIDEO INNOVATION

NOTICE

The information contained in this document is subject to change without notice. SmartAVI makes no warranty of any kind with regard to this material, including but not limited to, implied warranties of merchantability and fitness for particular purpose. SmartAVI will not be liable for errors contained herein or for incidental or consequential damages in connection with the furnishing, performance or use of this material. No part of this document may be photocopied, reproduced, or translated into another language without prior written consent from SmartAVI, Inc.

20180109



Designed and Manufactured in the USA

Tel: (800) AVI-2131 • (702) 800-0005
2455 W Cheyenne Ave, Suite 112
North Las Vegas, NV 89032

www.smartavi.com