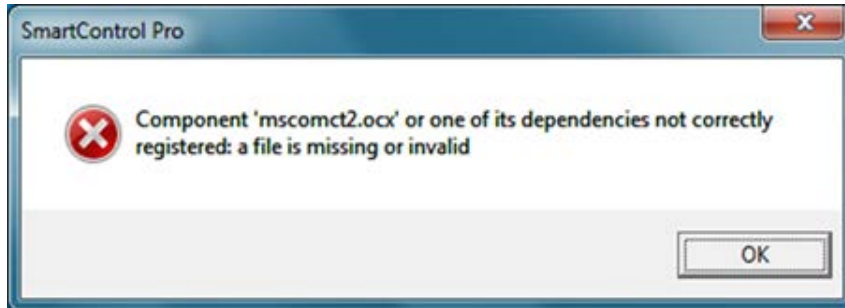


If the following Windows error occurs after installing and opening the “SmartControlPro” software:



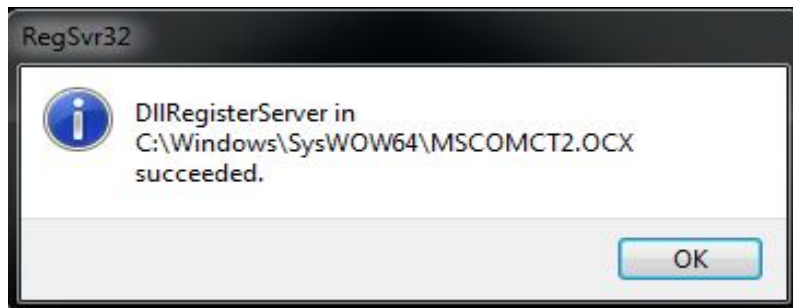
Apply the fix below.

Open a command prompt as “Administrator”.

Type this exactly as you see below.

`regsvr32 "C:\Windows\SysWOW64\MSCOMCT2.OCX"` (press the enter key)

You will see this.



Your “SmartControlPro” software should work now.